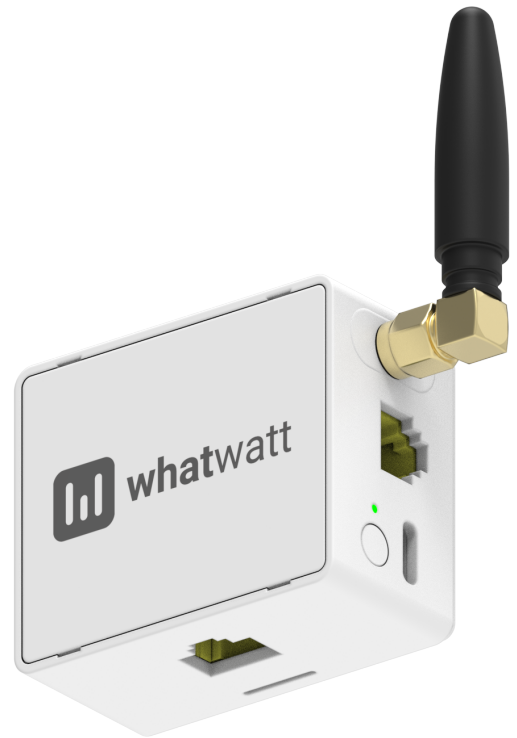


# whatwatt Go

whatwatt Go serves as a bridge between the user's private home network and the smart meter. It receives the power consumption or solar production data of the household from the smart meter and shares them with any or multiple integrations via WLAN or LAN.

<b>Smart-Meter Interfaces</b>	P1 M-Bus UART/TTL · Kamstrup Omnipower HAN pMEP
<b>Smart-Meter Protocols</b>	DSMR 4.x/5.x HDLV/MBUS DLMS/COSEM/OBIS · IEC 62056, EN 13757 Kamstrup · pull mode MEP · pull mode
<b>Power Supply</b>	USB-C 5VDC/0.5A or via RJ12 from meter
<b>Power Consumption</b>	0.25 – 0.75W <sup>1</sup>
<b>WiFi Standard</b>	2.4 GHz 802.11b/g/n, HT 20/40MHz, encryption, Open/WPA/WPA2/WPA3, WPS, operation mode access point/client
<b>WiFi Antenna</b>	External SMA (included)
<b>Ethernet</b>	10/100Mbps, IEEE 802.3/802.3u, Auto MDI/MDIX
<b>Local Data-Storage</b>	micro-SD-Card
<b>Mounting Options</b>	Magnet, Wall, DIN Rail
<b>Operation</b>	-10 – 40°C, 10 – 85% REH (non condensing)
<b>Protection Class</b>	IP20
<b>Dimension</b>	60 x 45 x 26 mm (W x H x D)
<b>Weight</b>	120 g
<b>Safety &amp; EMI</b>	CE
<b>Integrations</b>	whatwatt, myStrom, Solar Manager, REST, MQTT, Loxone, Home Assistant



<b>Type</b>	whatwatt Go
<b>EAN</b>	7629999796676
<b>Package Size</b>	87 x 87 x 60 mm
<b>Warranty</b>	2 years

1) Depending on WLAN mode/signal strength and Ethernet connection.  
Operation is possible without external 5VDC USB-C power supply.

## Smart- Meter Compatibility

whatwatt is compatible with all common smart meters using the following interfaces and standards.

### P1 Interface

Manufacturer	Model/Series	Setup	Port/Connector
Ensor	eRS301, eRS801	Out-of-the-box	RJ12
Iskrameco	AM550	with CII module AC140-K8	RJ12
Kamstrup	Omnipower	with Kamstrup P1 adapter	RJ12
	Omnia	Out-of-the-box	RJ12
Landis+Gyr	E360	Out-of-the-box	RJ12
Meter+Control	Flexy	Out-of-the-box	RJ12
NES	83335-3 (Gen 5)	Out-of-the-box	RJ12
Sagemcom	S211, T211	Out-of-the-box	RJ12
Semax / Elster	AS3000	with CII module AM540	RJ12

### M-Bus 34/22V Interface (In some cases external power via USB-C may be required)

Manufacturer	Model/Series	Setup	Port/Connector
Kaifa	MA309M	Out-of-the-box	RJ12
Landis+Gyr	E450 S4/S5, E570	Out-of-the-box	RJ12
Sagemcom	S210, T210-D	Out-of-the-box	RJ12

### UART/TTL Interface

Manufacturer	Model/Series	Setup	Port/Connector
Kamstrup	Omnipower	with whatwatt Kamstrup Adapter Out-of-the-box	RJ12

### pMEP Interface

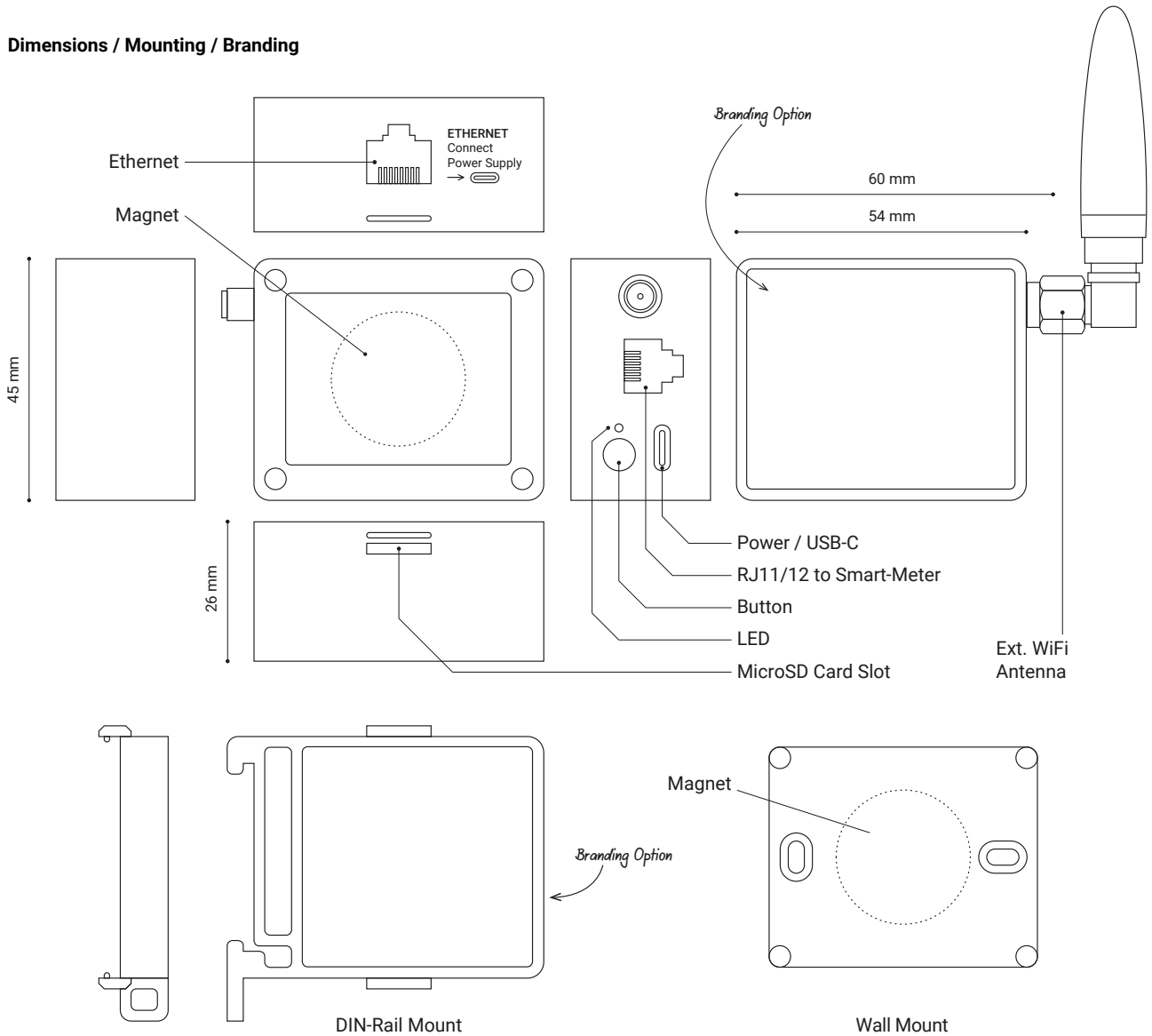
Manufacturer	Model/Series	Setup	Port/Connector
NES	83332-3 (Gen 3), 83334-3 (Gen 4)	RJ-12 cable installation under security cover	Clamps

### Mounting Options – DIN Rail, Wall, Magnet



whatwatt.ch  
info@whatwatt.ch

## Dimensions / Mounting / Branding



### What is in the Box

whatwatt Go  
 External Antenna  
 Wall Mount Adapter  
 DIN-Rail Mount Adapter  
 RJ12 – RJ12 Cable 0.7 m  
 USB-C Power Cable 2.0 m

### Options

RJ11/12 – Kamstrup HAN Port Adapter  
 USB-C Power Supply  
 USB-C Power Supply for DIN-Rail  
 WIFI Antenna External 1.5 m  
 WIFI Antenna Double Gain  
 SD Card 32 GB  
 Ethernet Cable 3.0 m

whatwatt.ch  
 info@whatwatt.ch